



Palm Springs Development Project

College of the Desert

PMT 3 May 17, 2023

WRNSSTUDIO

Farrell: Main Campus Entry



Farrell: East Accelerator Entry & Loading



Accelerator at Baristo



Accelerator: Main Entry Experience



Accelerator: Level 2 Exterior Walkway



Accelerator: Western Expanse of the Accelerator



Events Center & Culinary Institute: Breakout Plaza



Aerial Looking East to West (Overall of Campus)

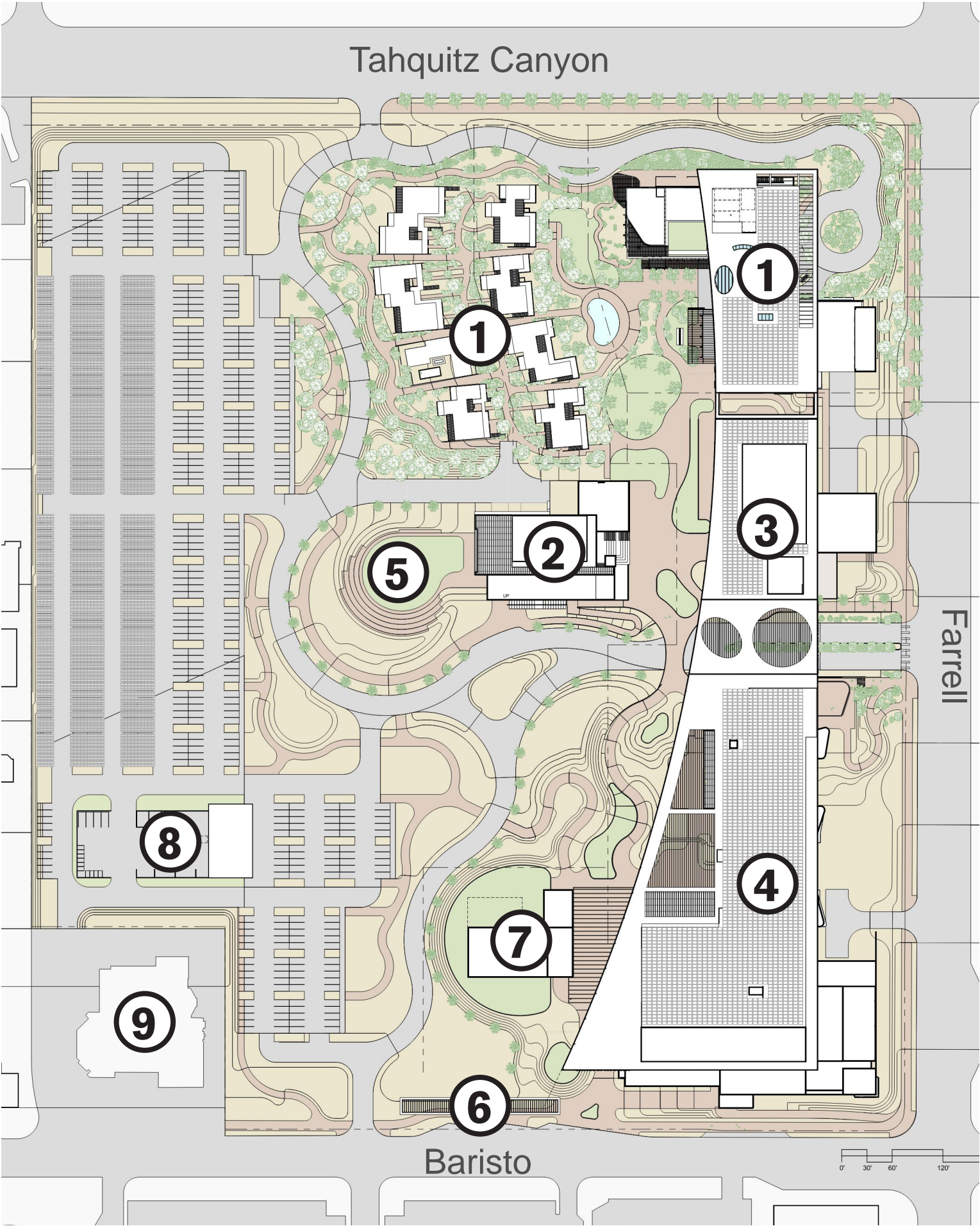


Site Plan Evolution

March 2021: 50% Schematic Design

Legend:

- ① Learning Hotel
- ② Event Center
- ③ Culinary Institute
- ④ Accelerator
- ⑤ Amphitheater
- ⑥ Mobility Hub
- ⑦ Central Utility Plant (CUP)
- ⑧ M&O & Service Yard
- ⑨ Palm Springs Cultural Center

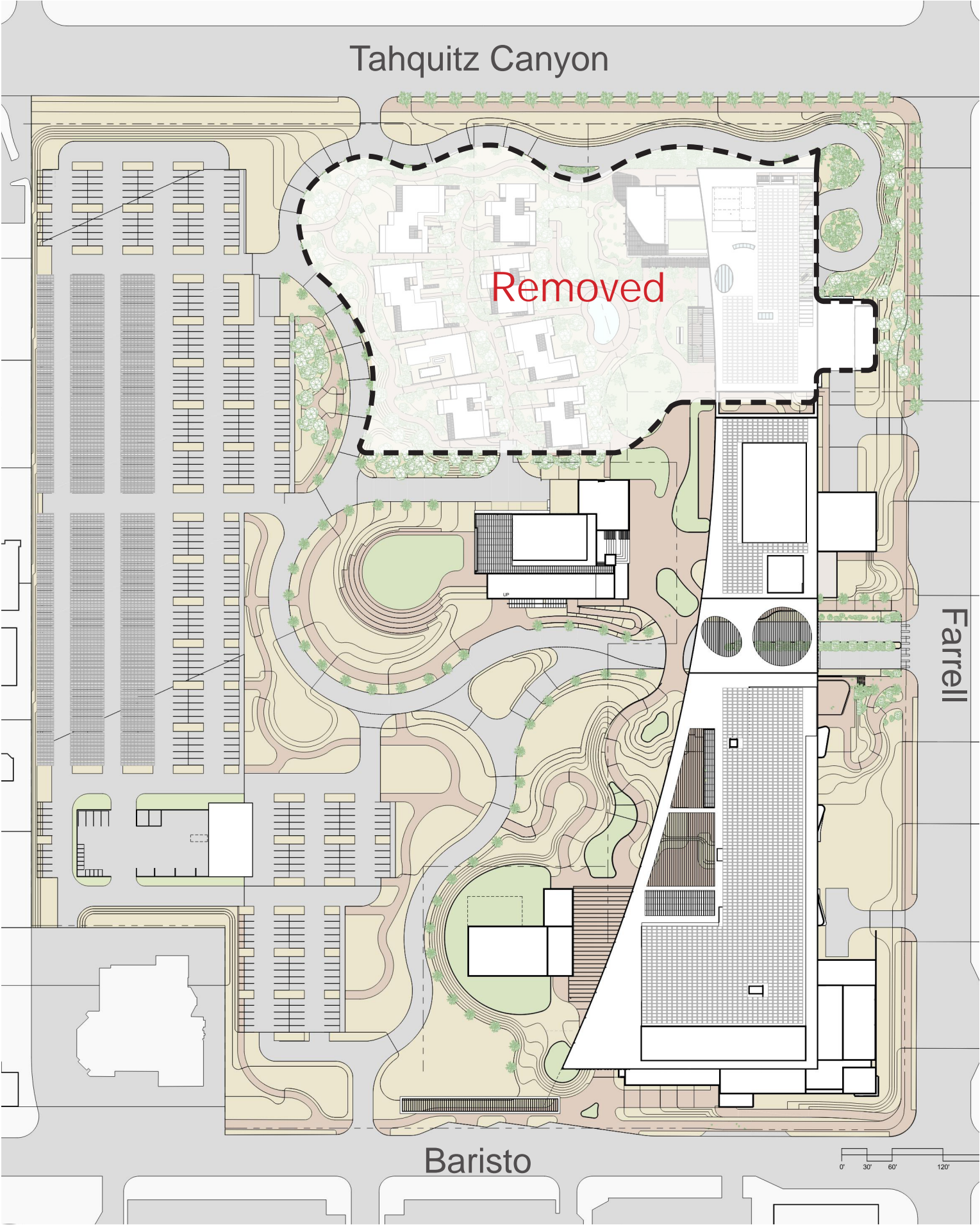


Site Plan Evolution

March 2021: 50% Schematic Design

Learning Hotel removed from scope

- Removed per Board direction at the Feb 16, 2023 meeting

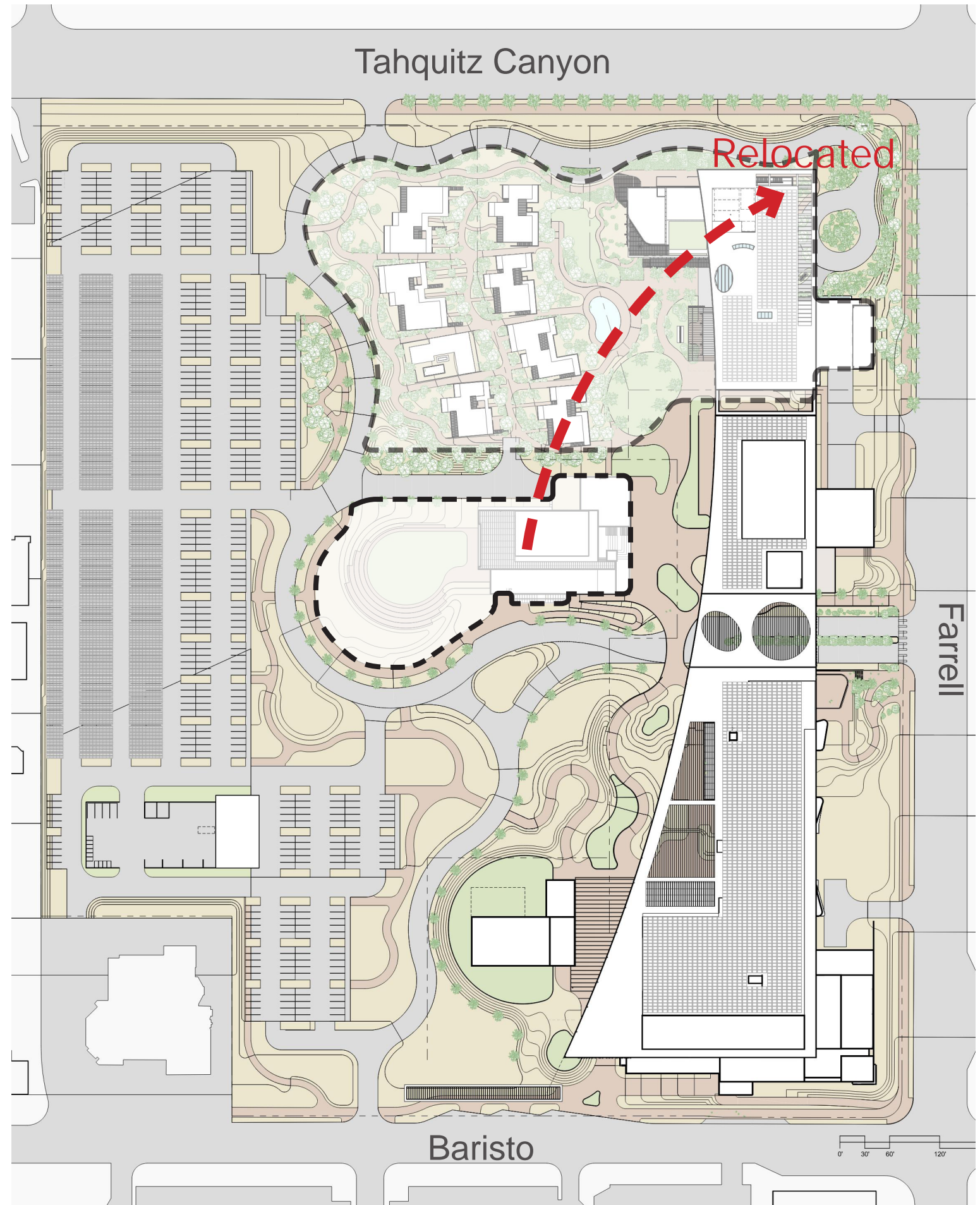


Site Plan Evolution

March 2021: 50% Schematic Design

Events Center relocated to Tahquitz & Farrell

- Helps “complete” the project south to north
- Addresses Tahquitz and Farrell since the Hotel was removed
- Puts an active and civic use on a prominent corner

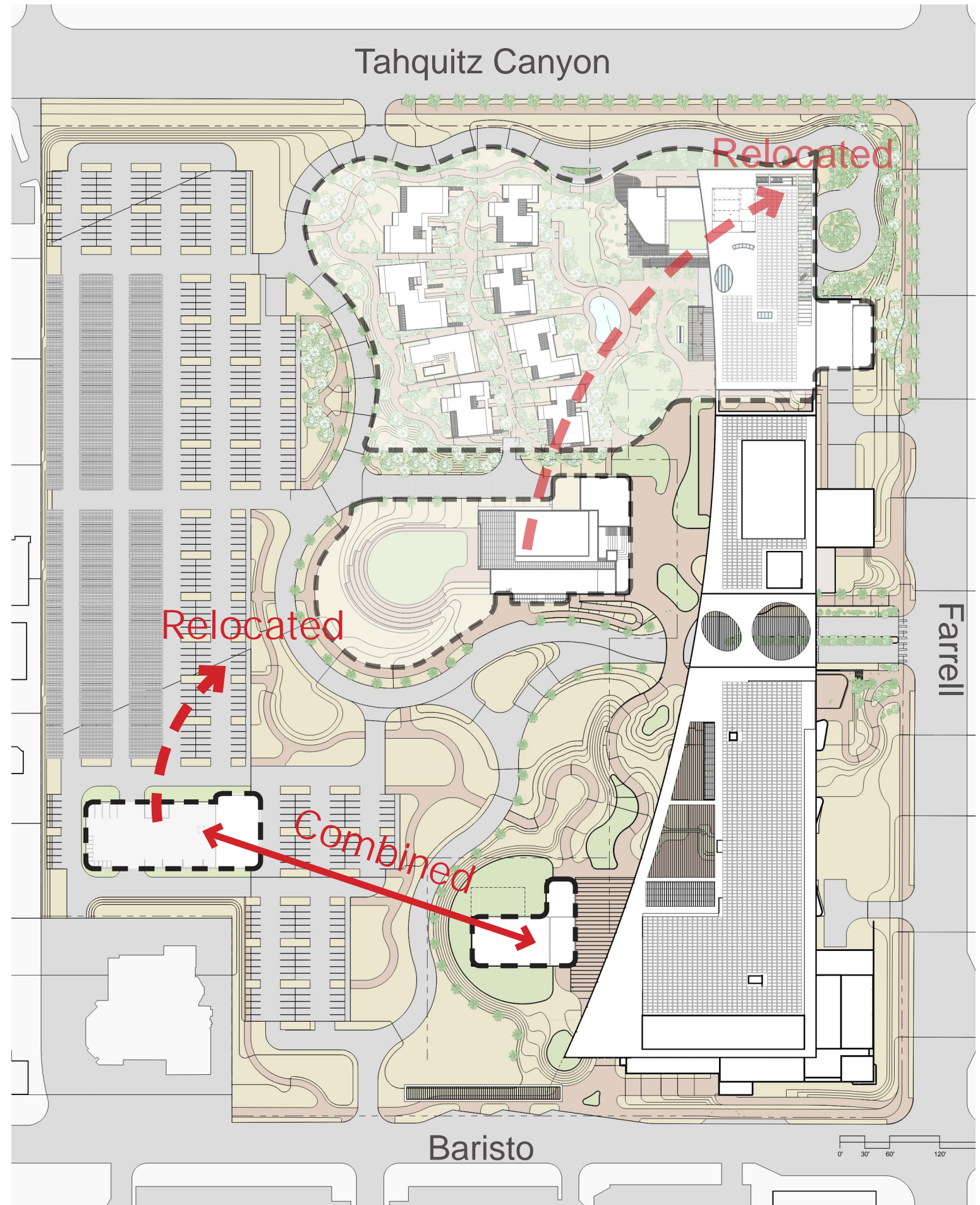


Site Plan Evolution

March 2021: 50% Schematic Design

M&O + CUP combined and relocated

- Combined and relocated for more efficiency & functionality
- M&O acts as an acoustical buffer for the western community

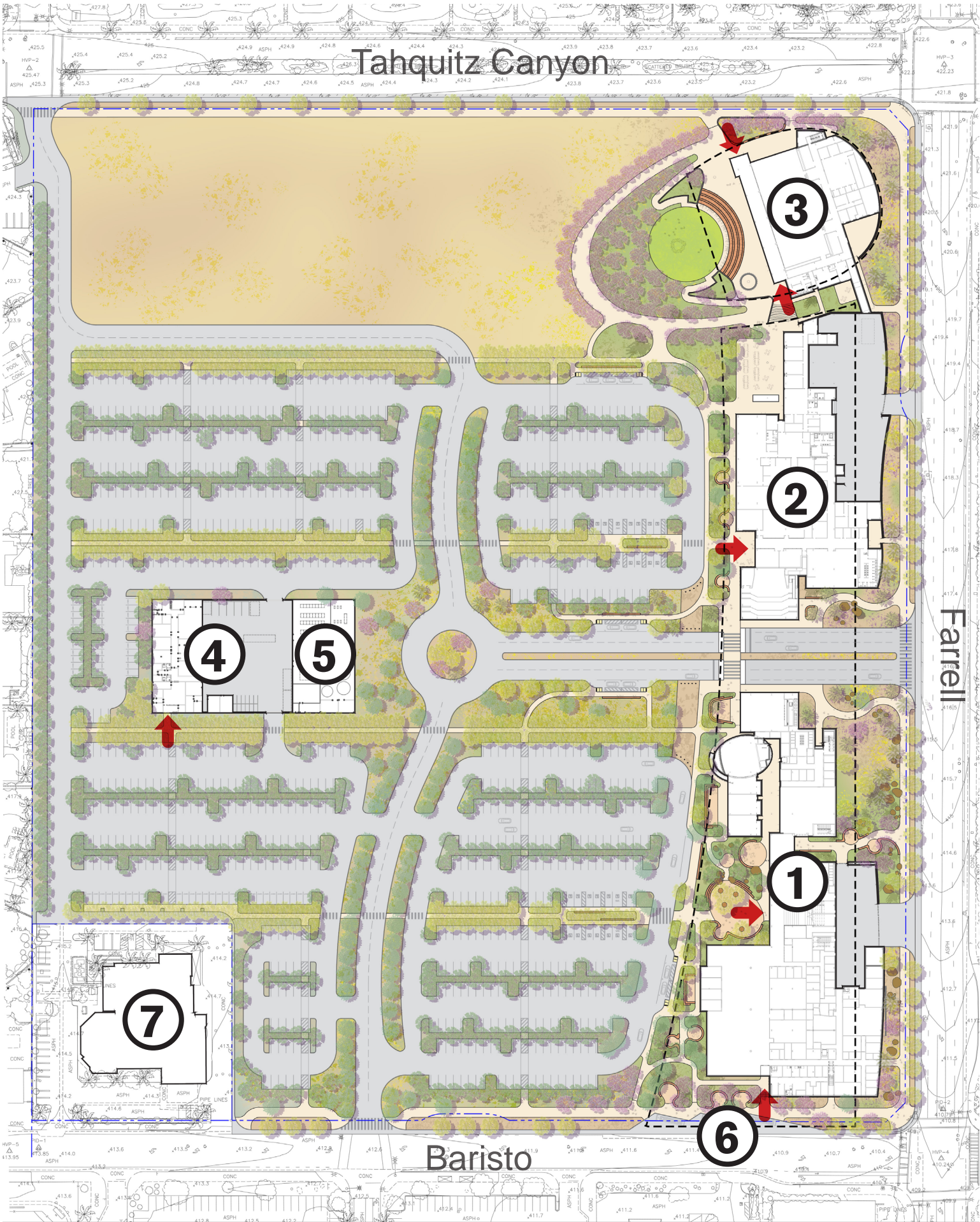


Site Plan







Level 1

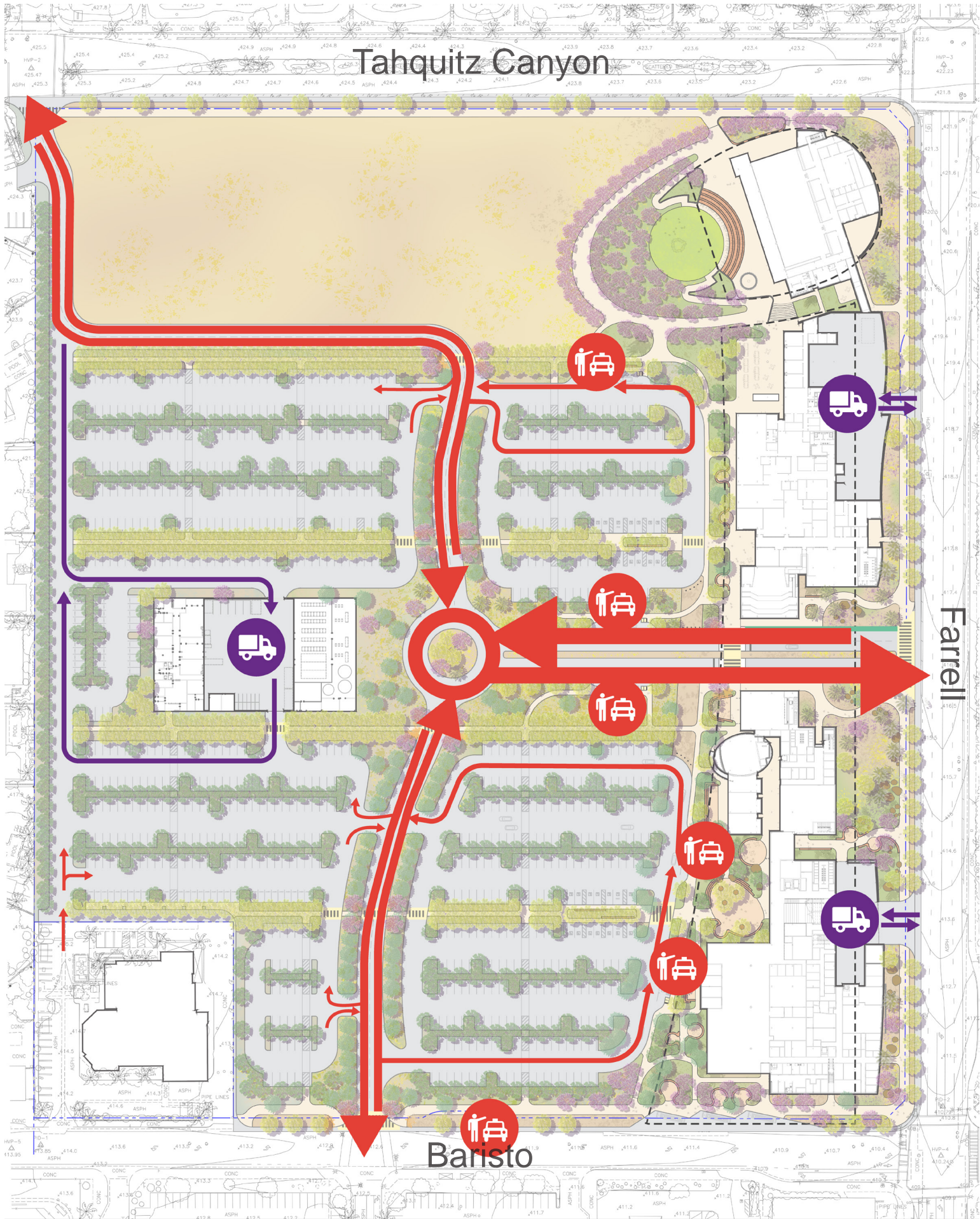
Legend:

- ① Accelerator
- ② Culinary Institute
- ③ Events Center
- ④ M&O & Service Yard
- ⑤ Central Utility Plant (CUP)
- ⑥ Mobility Hub
- ⑦ Palm Springs Cultural Center
- ➡ Main Building Entry



Vehicular Access/Circulation

-   Service Vehicle Route
-  Vehicular Drop Off
-  Primary Vehicular Campus Route
-  Secondary Vehicular Campus Route
-  Primary Parking Vehicular Route



Walkability from Public Transit



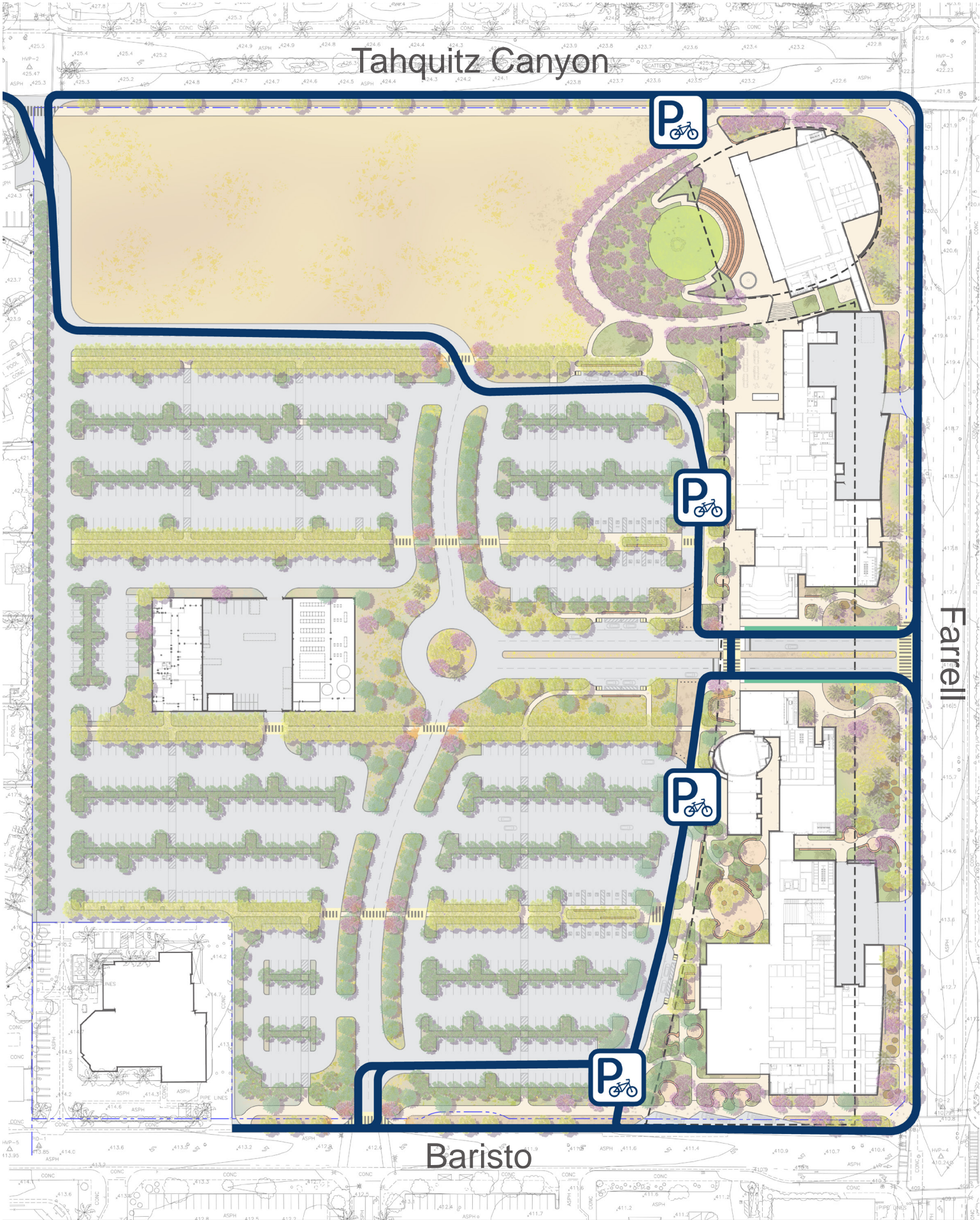
Bus Stop



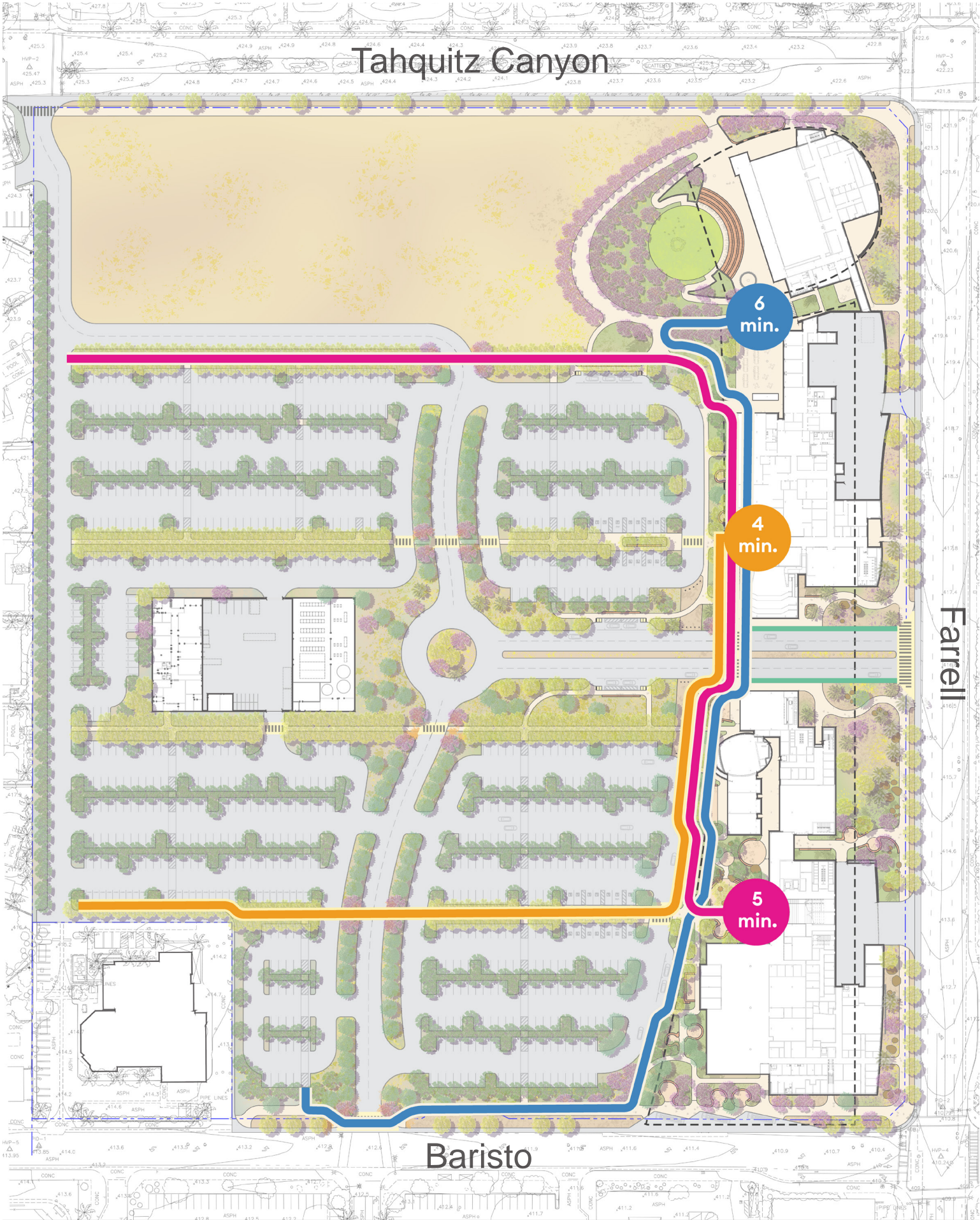
Bike Access/Circulation



Bike Parking



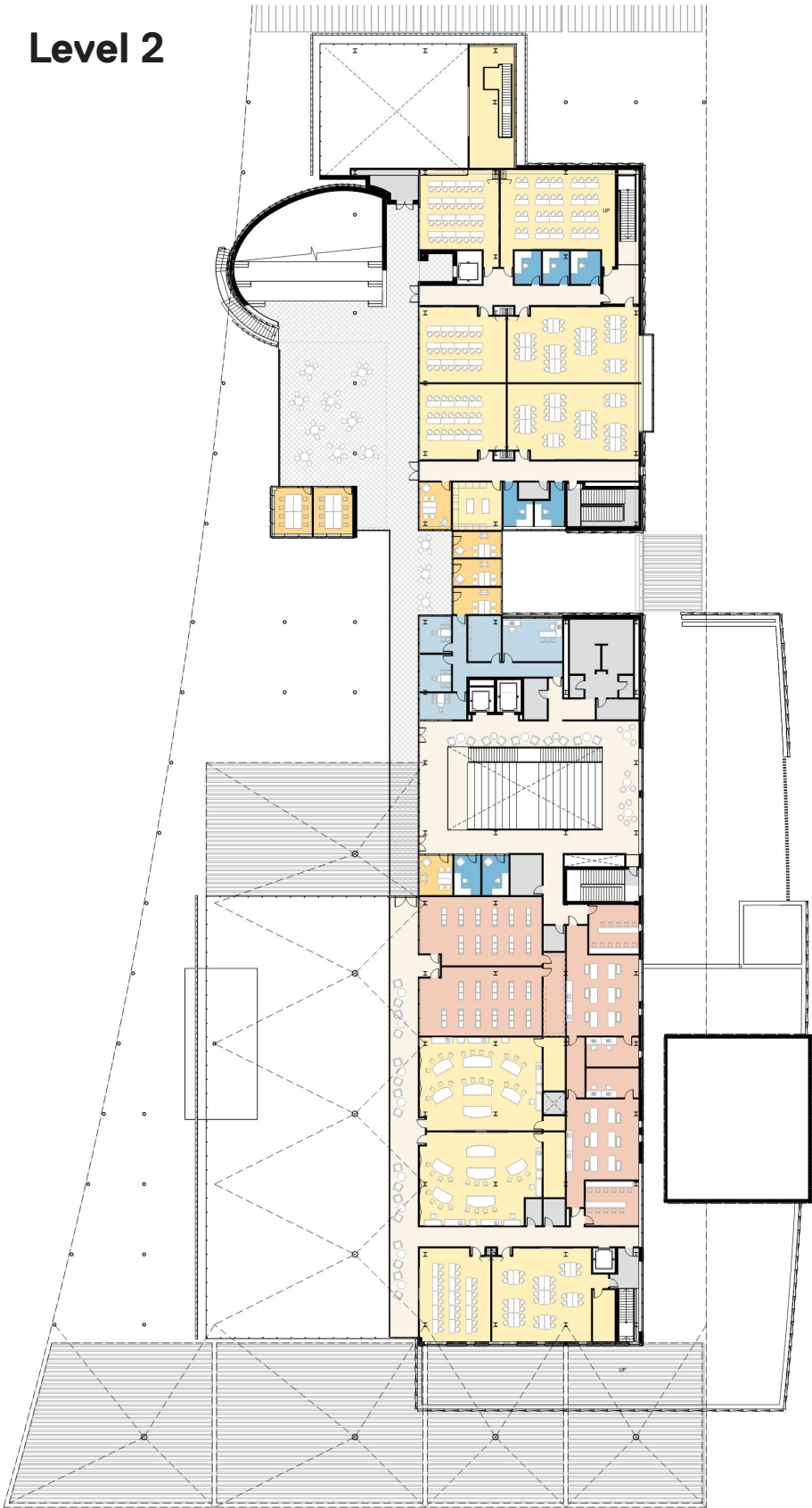
Walkability from Parking



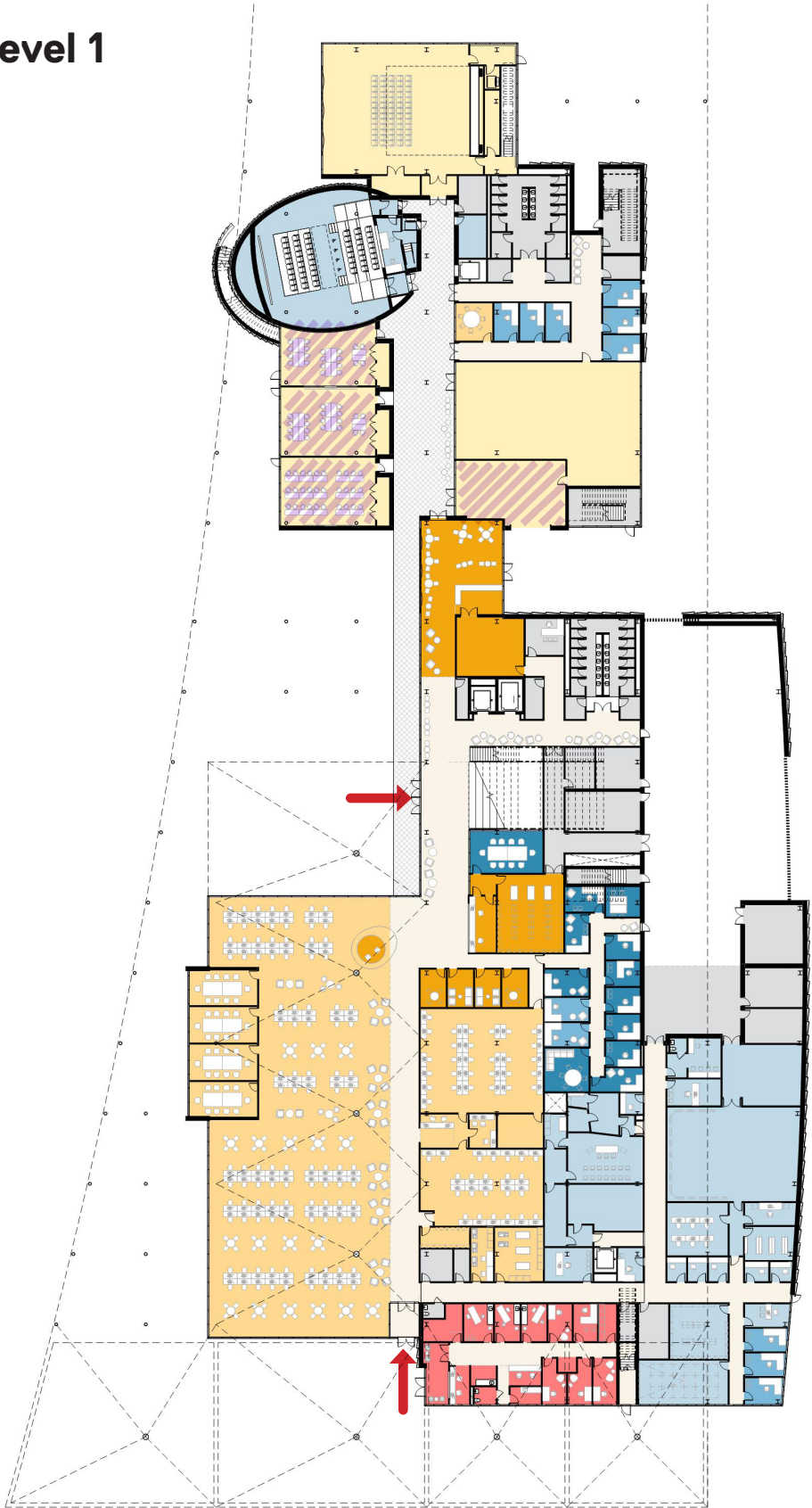
Accelerator - Level 1 & 2

- STUDENT COMMONS
- STUDENT HEALTH
- STUDENT ACADEMIC SUPPORT/TECH SERVICES
- INSTRUCTIONAL CLASSROOM
- CENTER OF EXCELLENCE FOR HEALTHCARE
- ARCHITECTURE
- DIGITAL MEDIA / RADIO
- BUILDING SUPPORT

Level 2



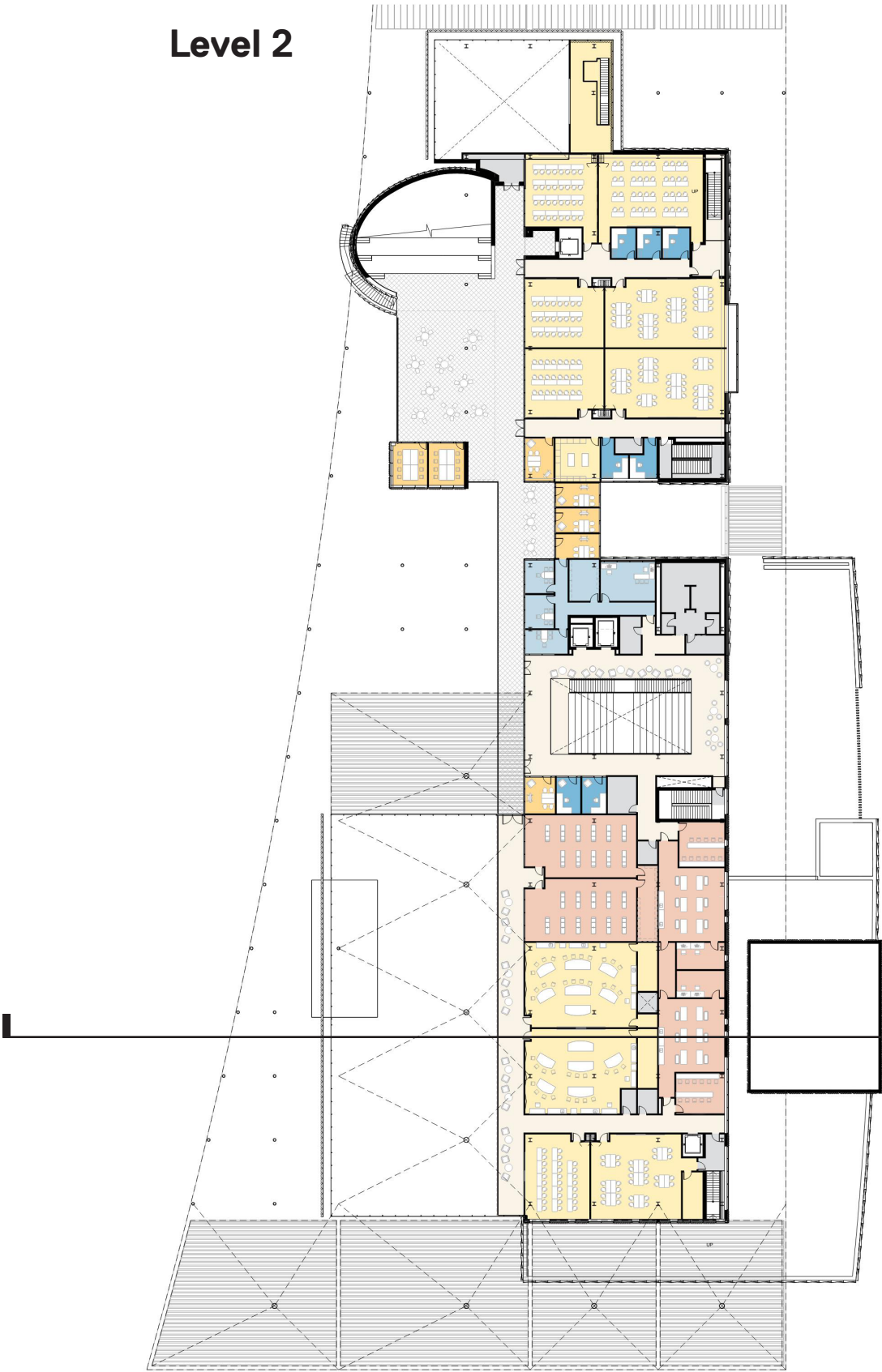
Level 1



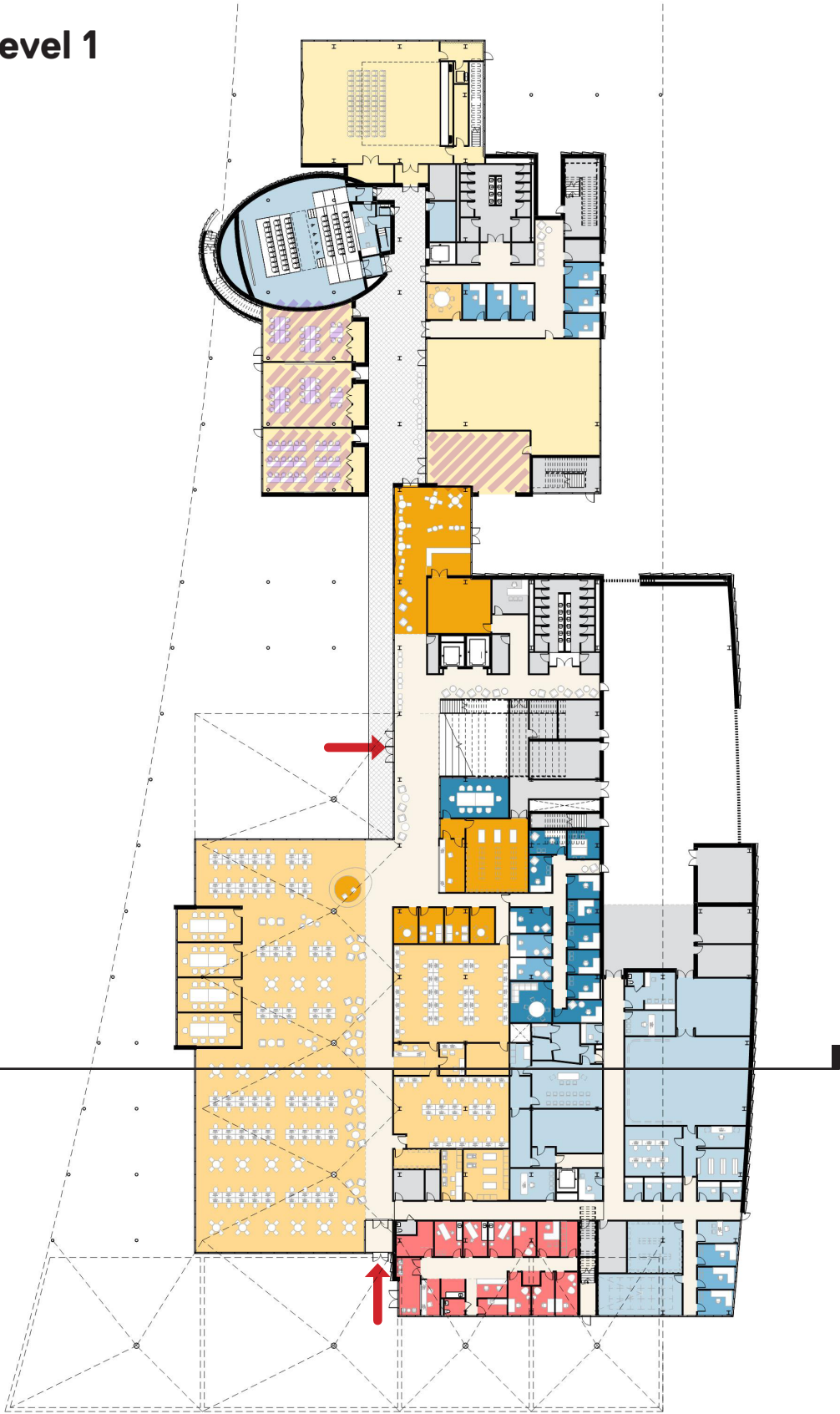
Accelerator - Level 1 & 2

- STUDENT COMMONS
- STUDENT HEALTH
- STUDENT ACADEMIC SUPPORT/TECH SERVICES
- INSTRUCTIONAL CLASSROOM
- CENTER OF EXCELLENCE FOR HEALTHCARE
- ARCHITECTURE
- DIGITAL MEDIA / RADIO
- BUILDING SUPPORT

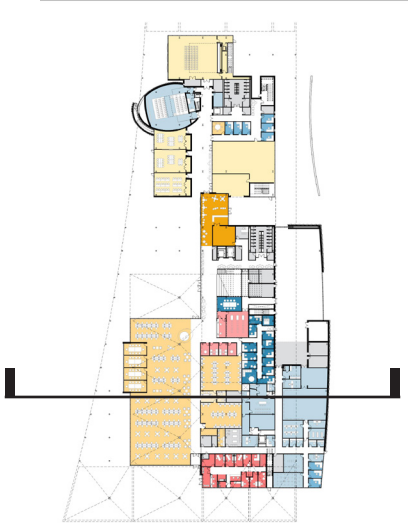
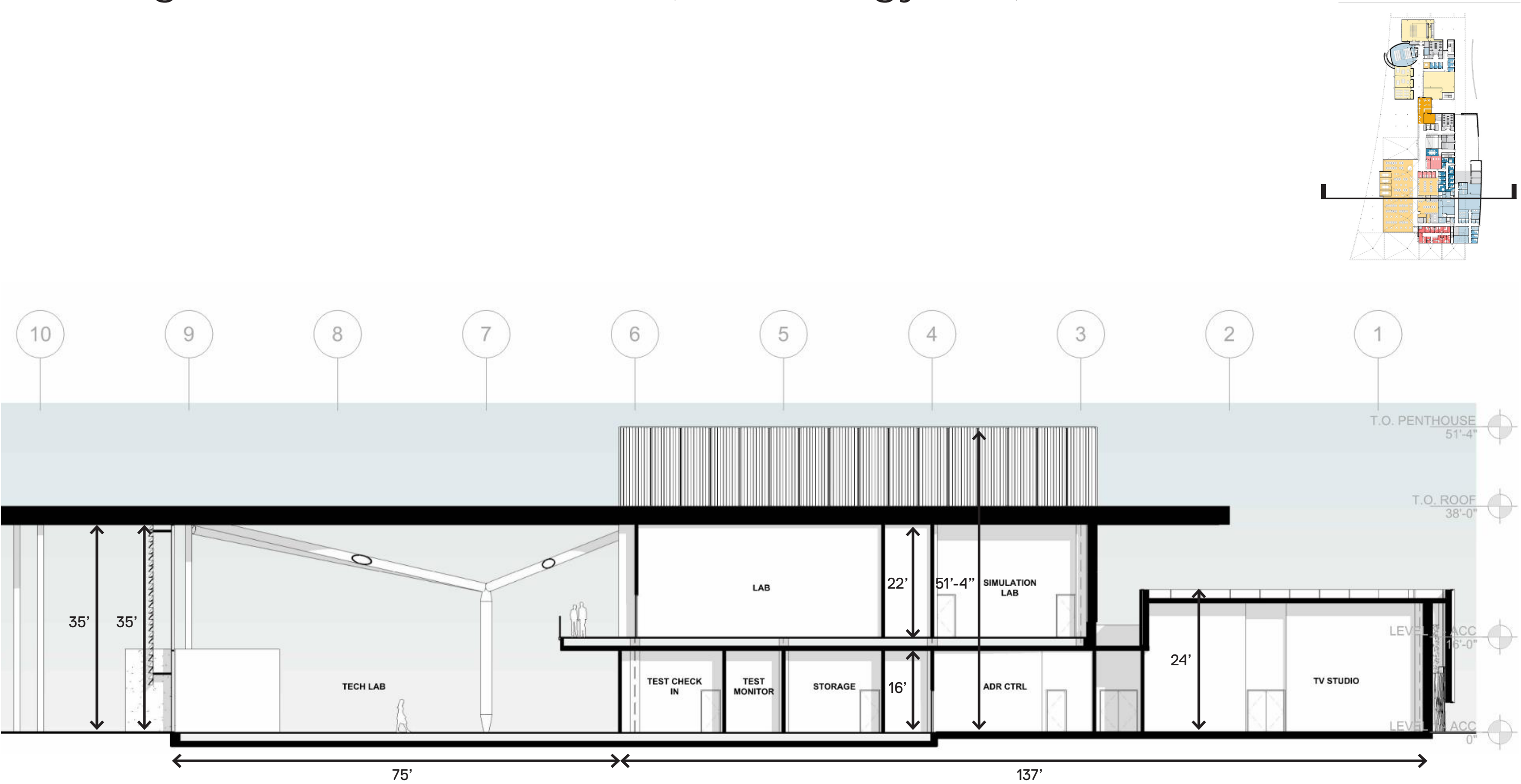
Level 2



Level 1



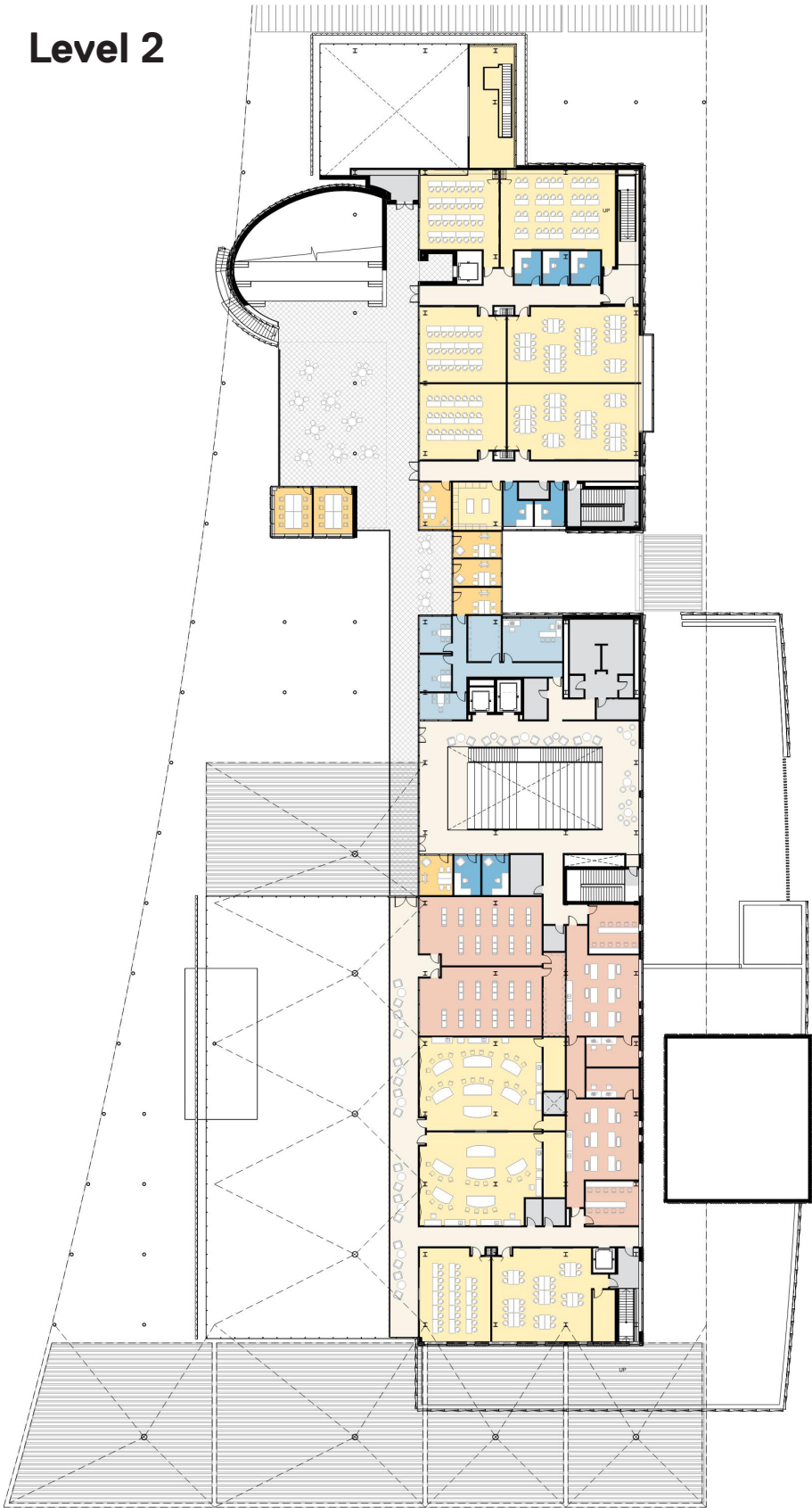
Building Section - Accelerator (Technology Lab)



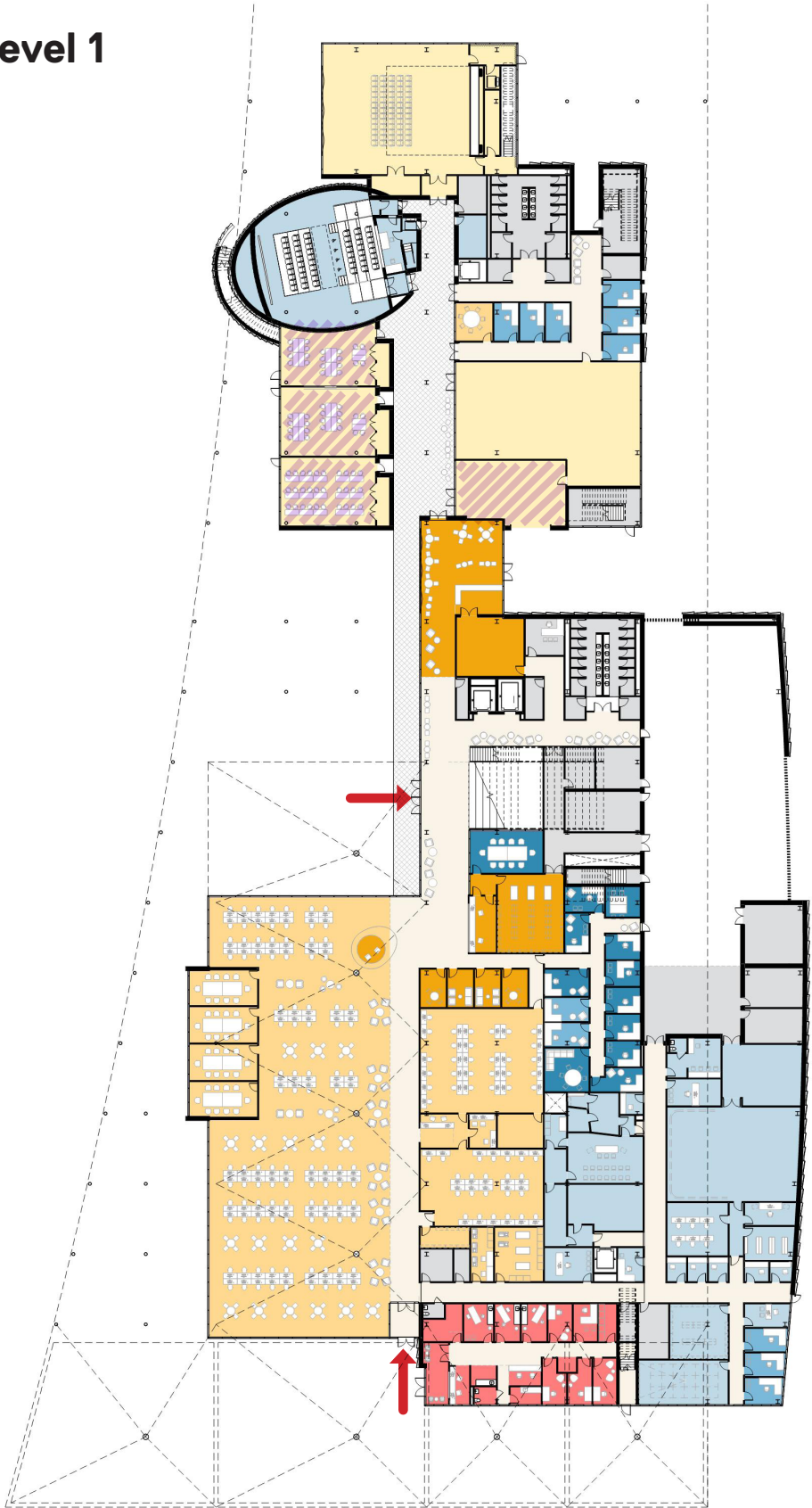
Accelerator - Level 1 & 2

- STUDENT COMMONS
- STUDENT HEALTH
- STUDENT ACADEMIC SUPPORT/TECH SERVICES
- INSTRUCTIONAL CLASSROOM
- CENTER OF EXCELLENCE FOR HEALTHCARE
- ARCHITECTURE
- DIGITAL MEDIA / RADIO
- BUILDING SUPPORT

Level 2



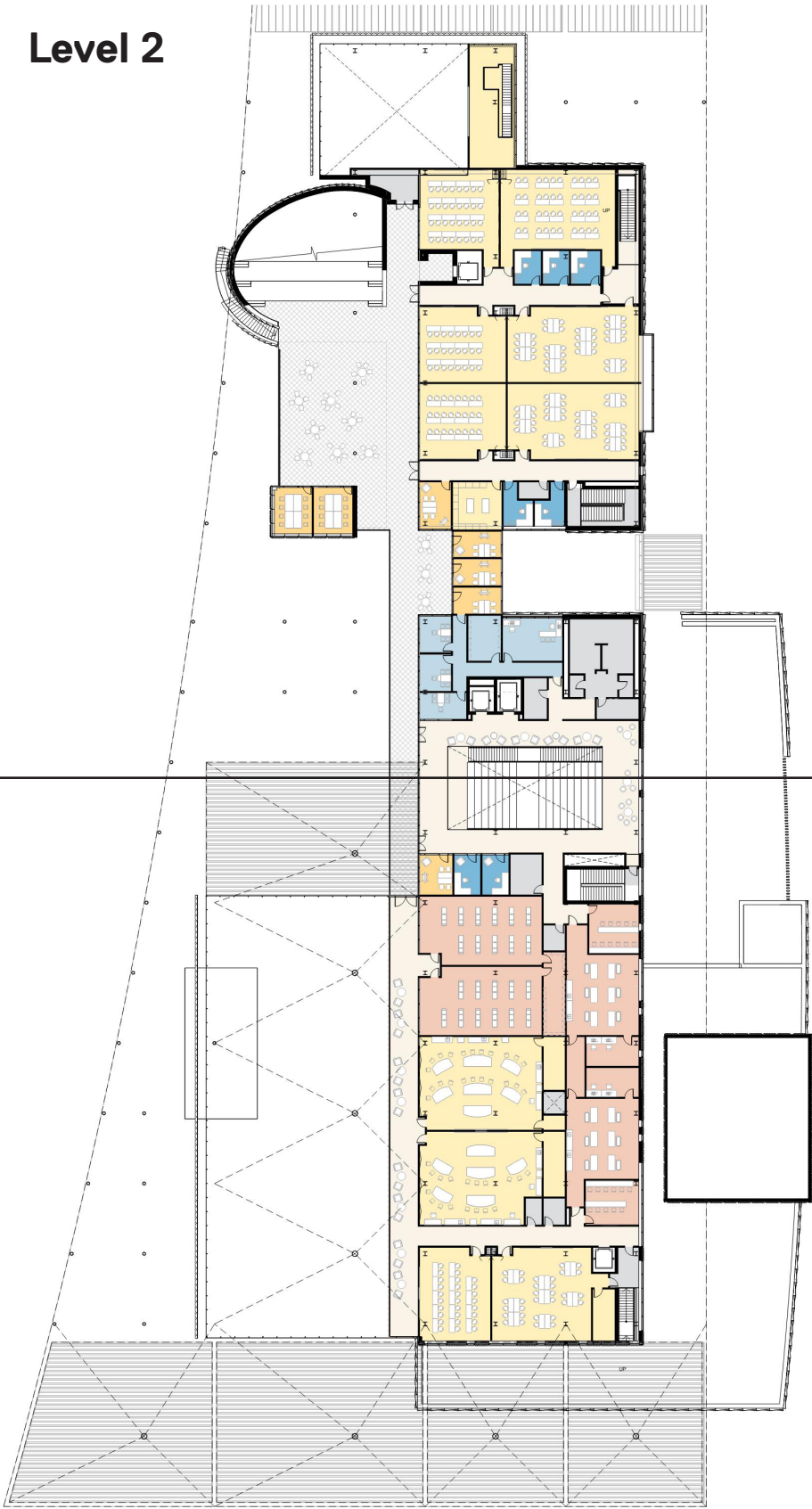
Level 1



Accelerator - Level 1 & 2

- STUDENT COMMONS
- STUDENT HEALTH
- STUDENT ACADEMIC SUPPORT/TECH SERVICES
- INSTRUCTIONAL CLASSROOM
- CENTER OF EXCELLENCE FOR HEALTHCARE
- ARCHITECTURE
- DIGITAL MEDIA / RADIO
- BUILDING SUPPORT

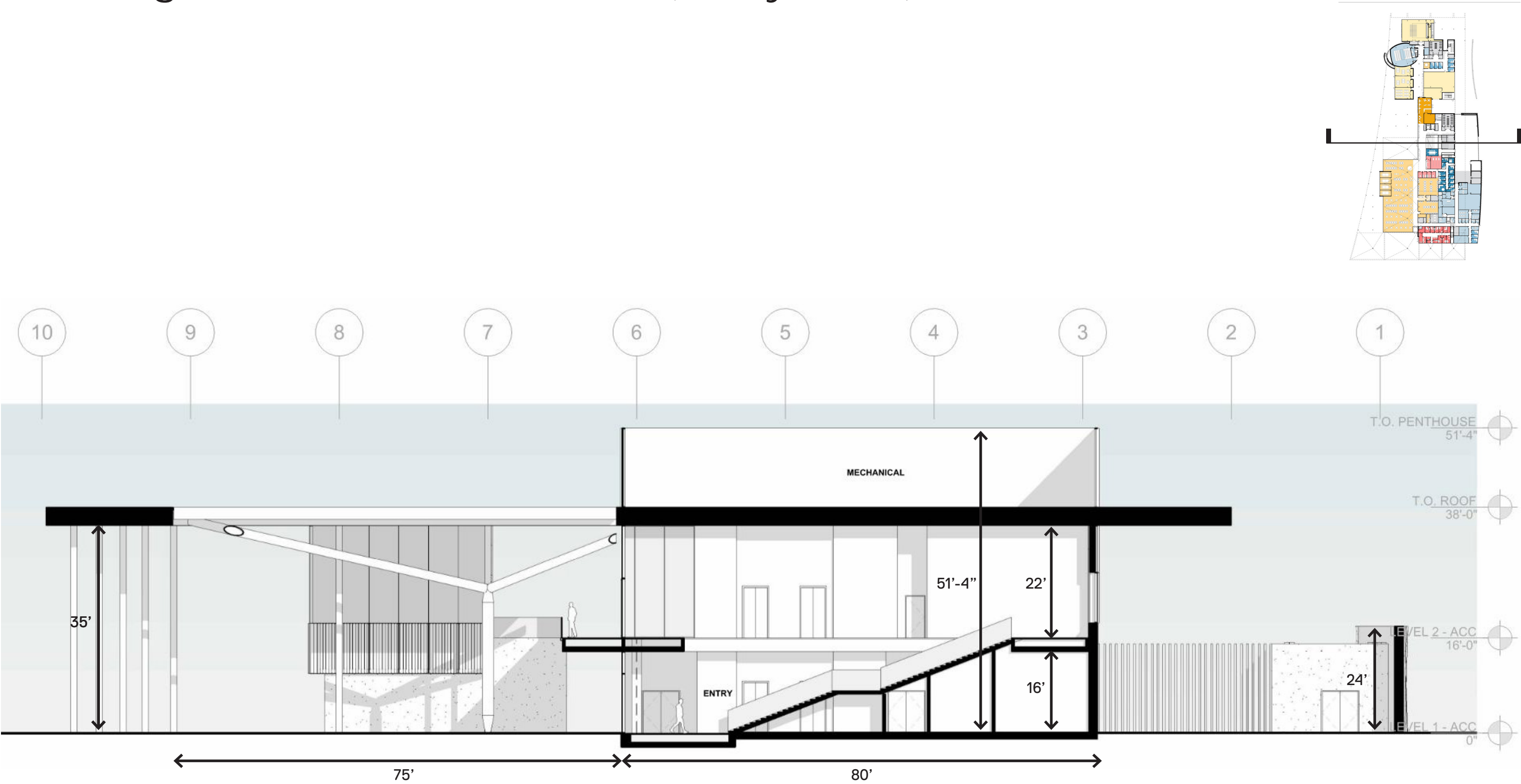
Level 2



Level 1



Building Section - Accelerator (Entry Stair)



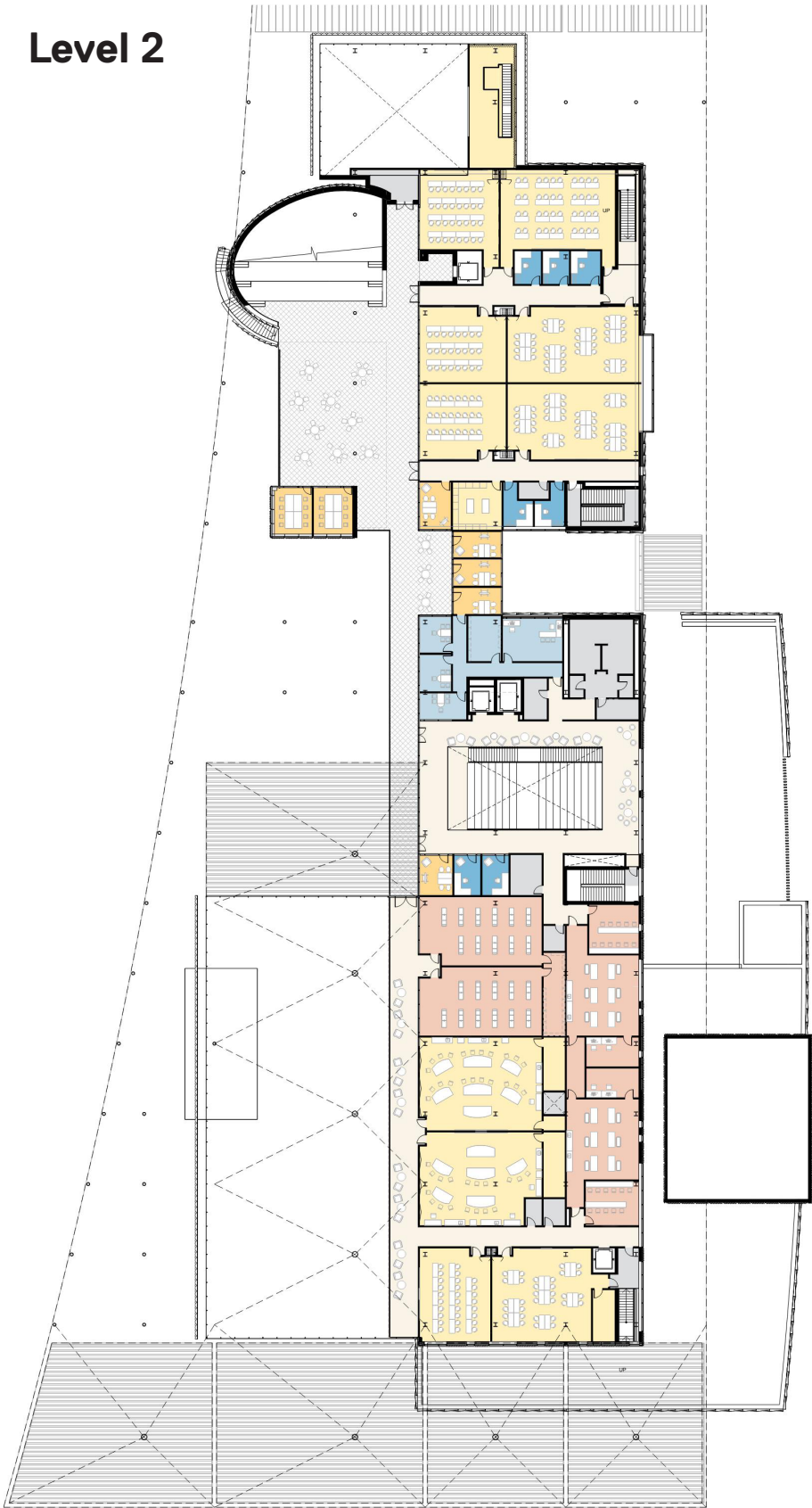
Accelerator: Main Entry Experience



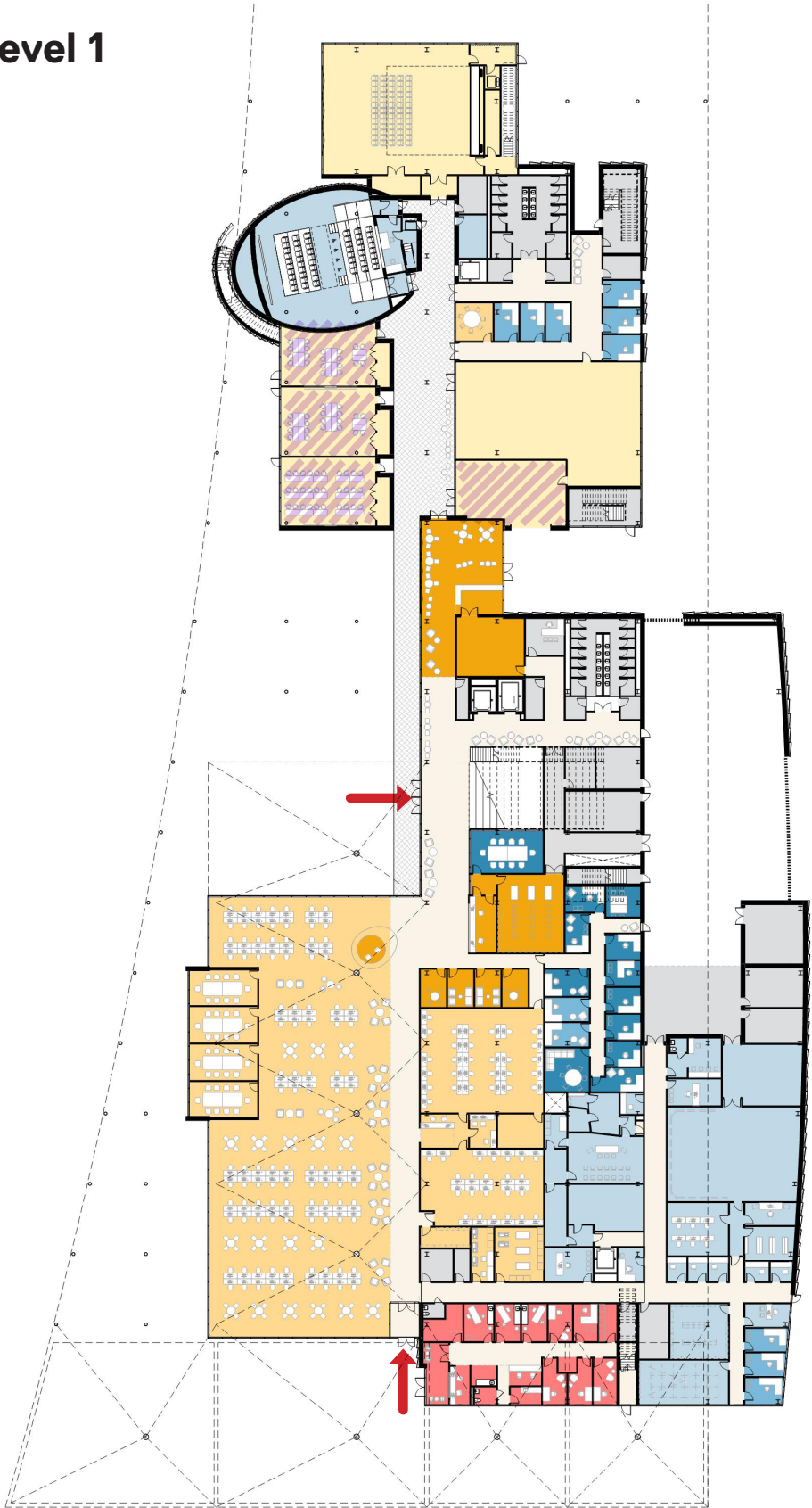
Accelerator - Level 1 & 2

- STUDENT COMMONS
- STUDENT HEALTH
- STUDENT ACADEMIC SUPPORT/TECH SERVICES
- INSTRUCTIONAL CLASSROOM
- CENTER OF EXCELLENCE FOR HEALTHCARE
- ARCHITECTURE
- DIGITAL MEDIA / RADIO
- BUILDING SUPPORT

Level 2



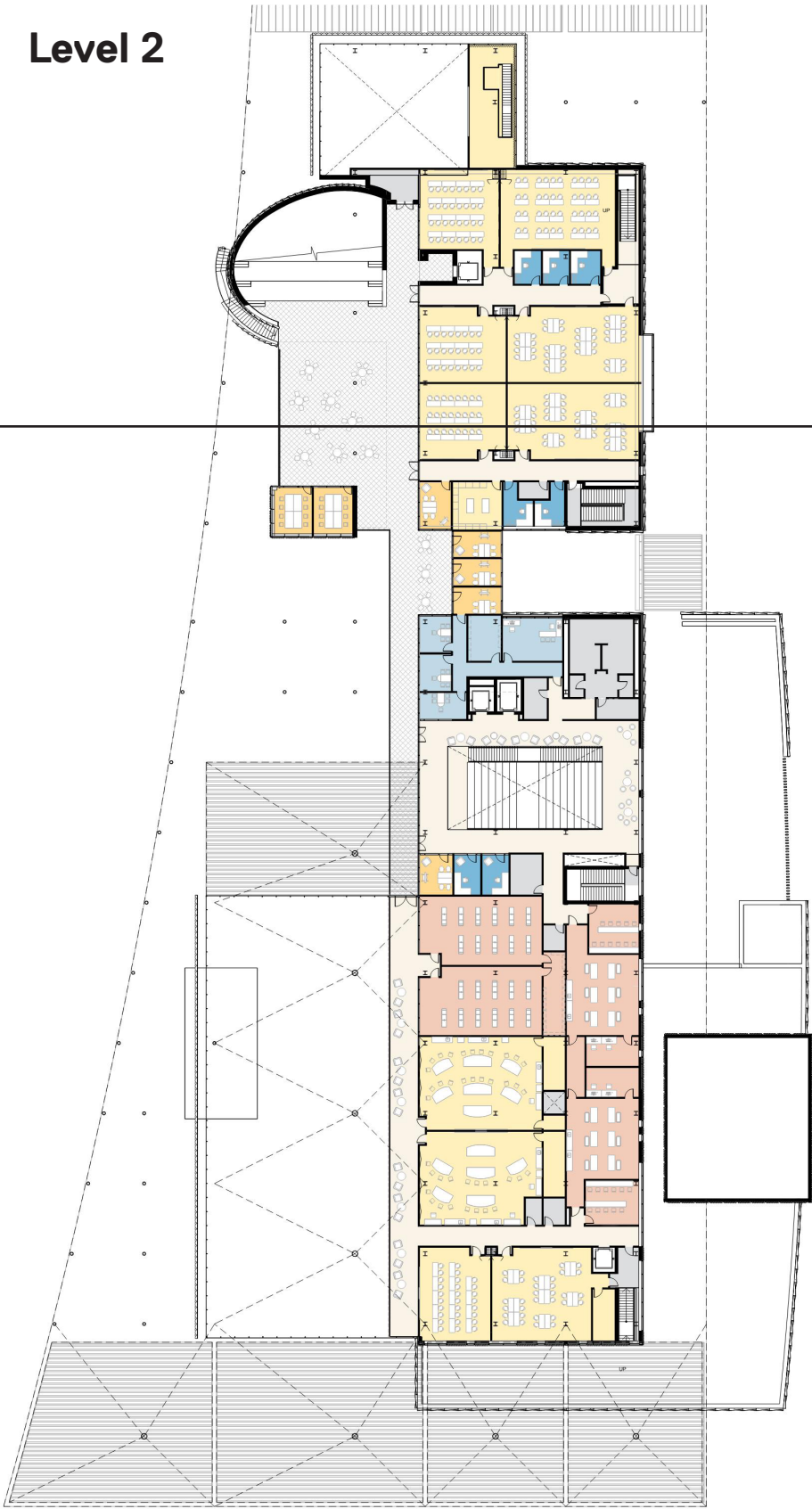
Level 1



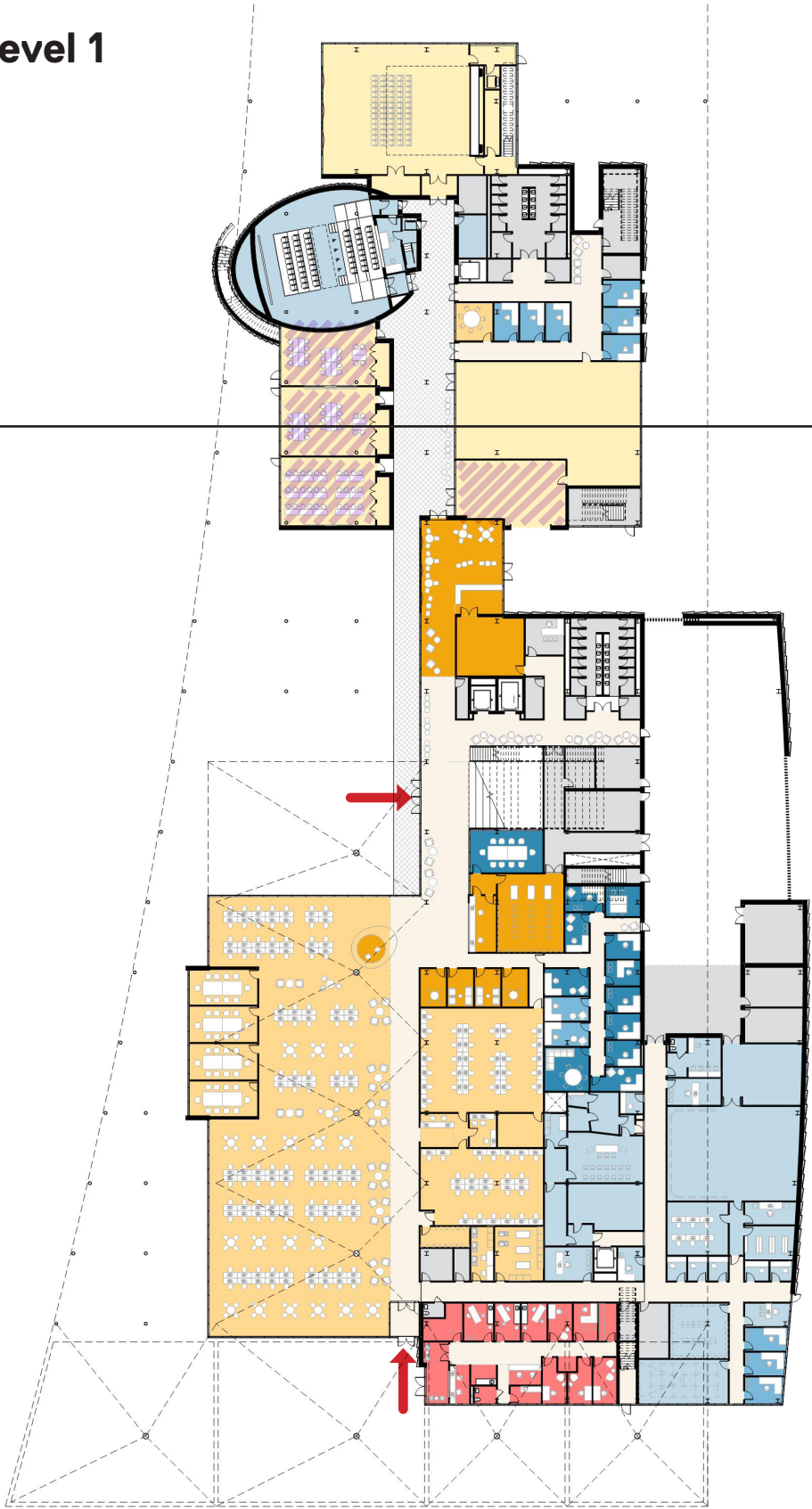
Accelerator - Level 1 & 2

- STUDENT COMMONS
- STUDENT HEALTH
- STUDENT ACADEMIC SUPPORT/TECH SERVICES
- INSTRUCTIONAL CLASSROOM
- CENTER OF EXCELLENCE FOR HEALTHCARE
- ARCHITECTURE
- DIGITAL MEDIA / RADIO
- BUILDING SUPPORT

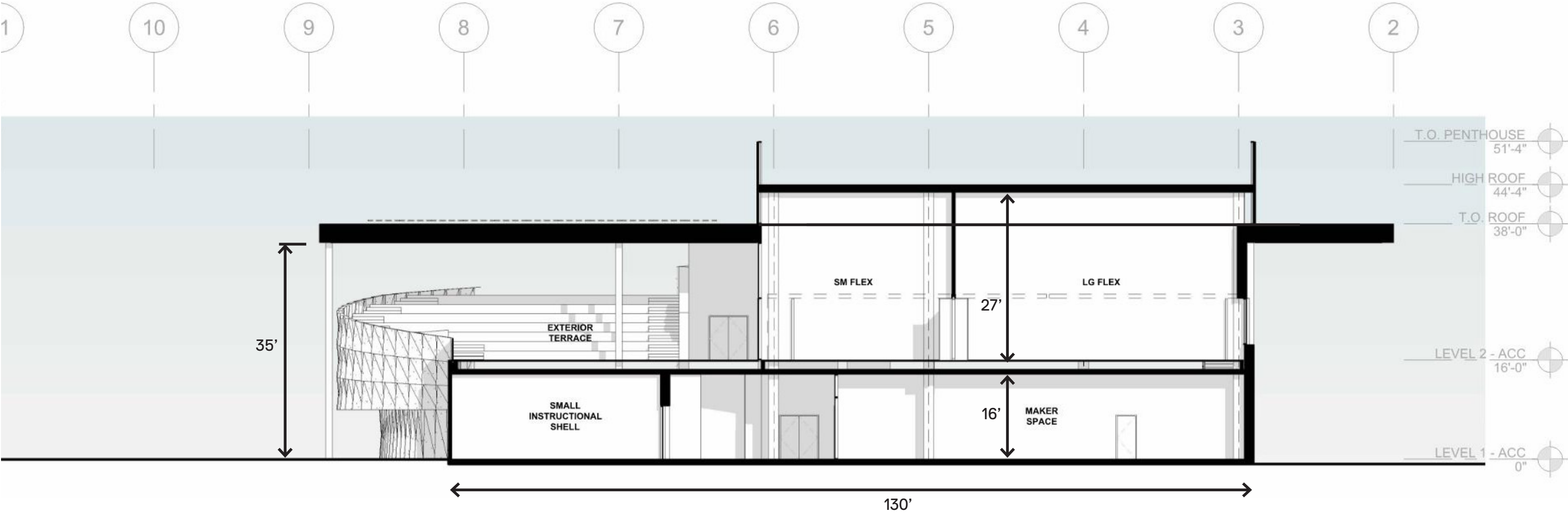
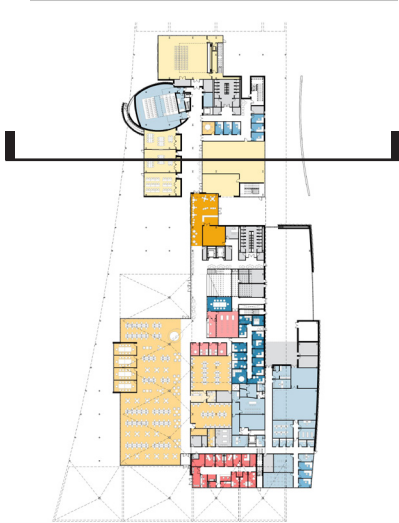
Level 2



Level 1



Building Section - Accelerator (4-Pack Instructional Shells)

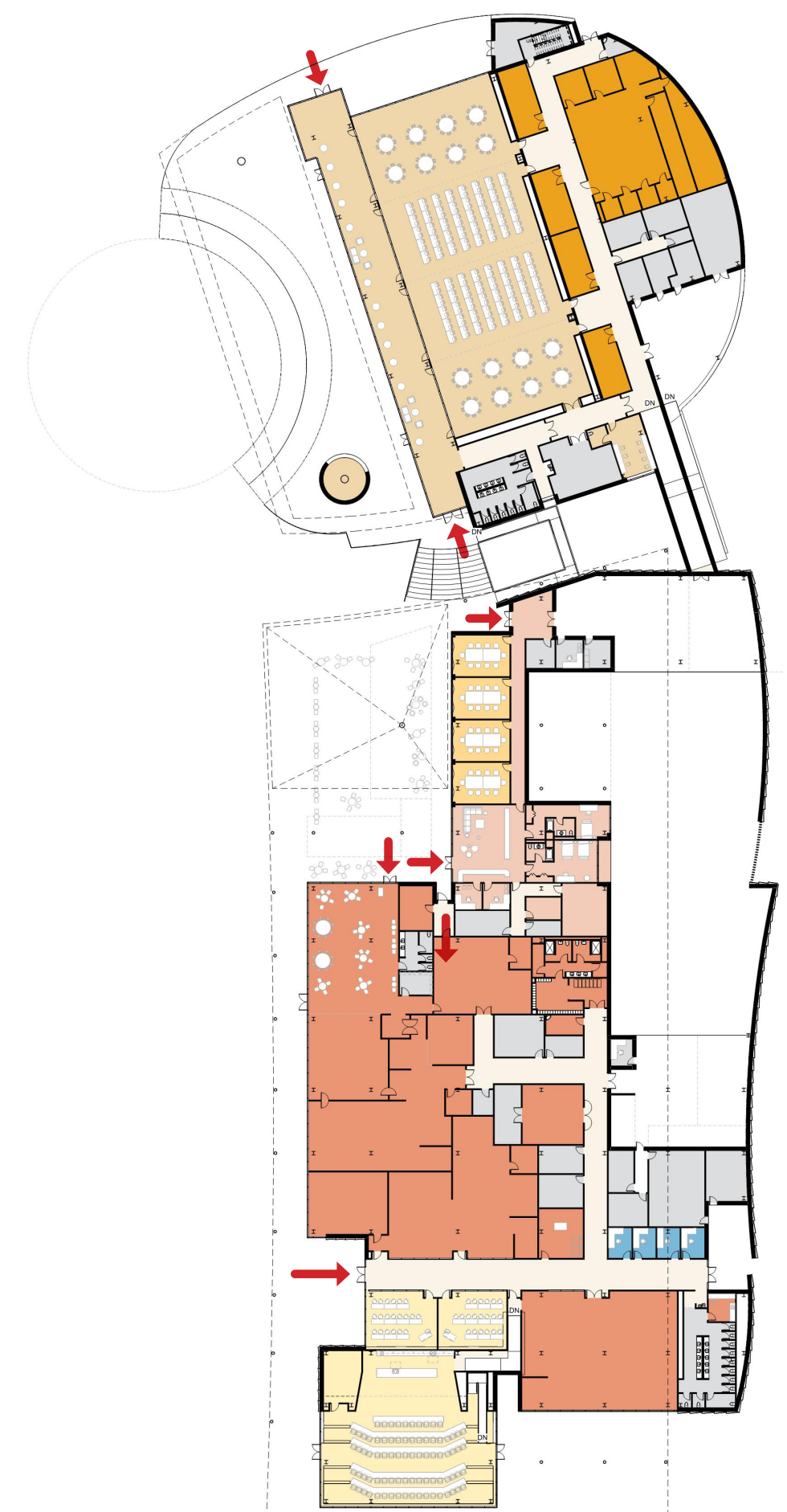


Accelerator: Level 2 Exterior Walkway



Culinary Institute & Events Center

- STUDENT ACADEMIC
SUPPORT/TECH SERVICES
- INSTRUCTIONAL CLASSROOM
- CULINARY
MANAGEMENT
- HOSPITALITY
MANAGEMENT
- EVENTS
- EVENTS KITCHEN
- BUILDING SUPPORT



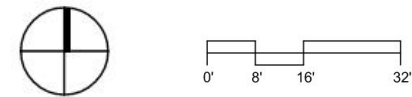
Events Center & Culinary Institute: Breakout Plaza



Campus Support Building (M&O + CUP)

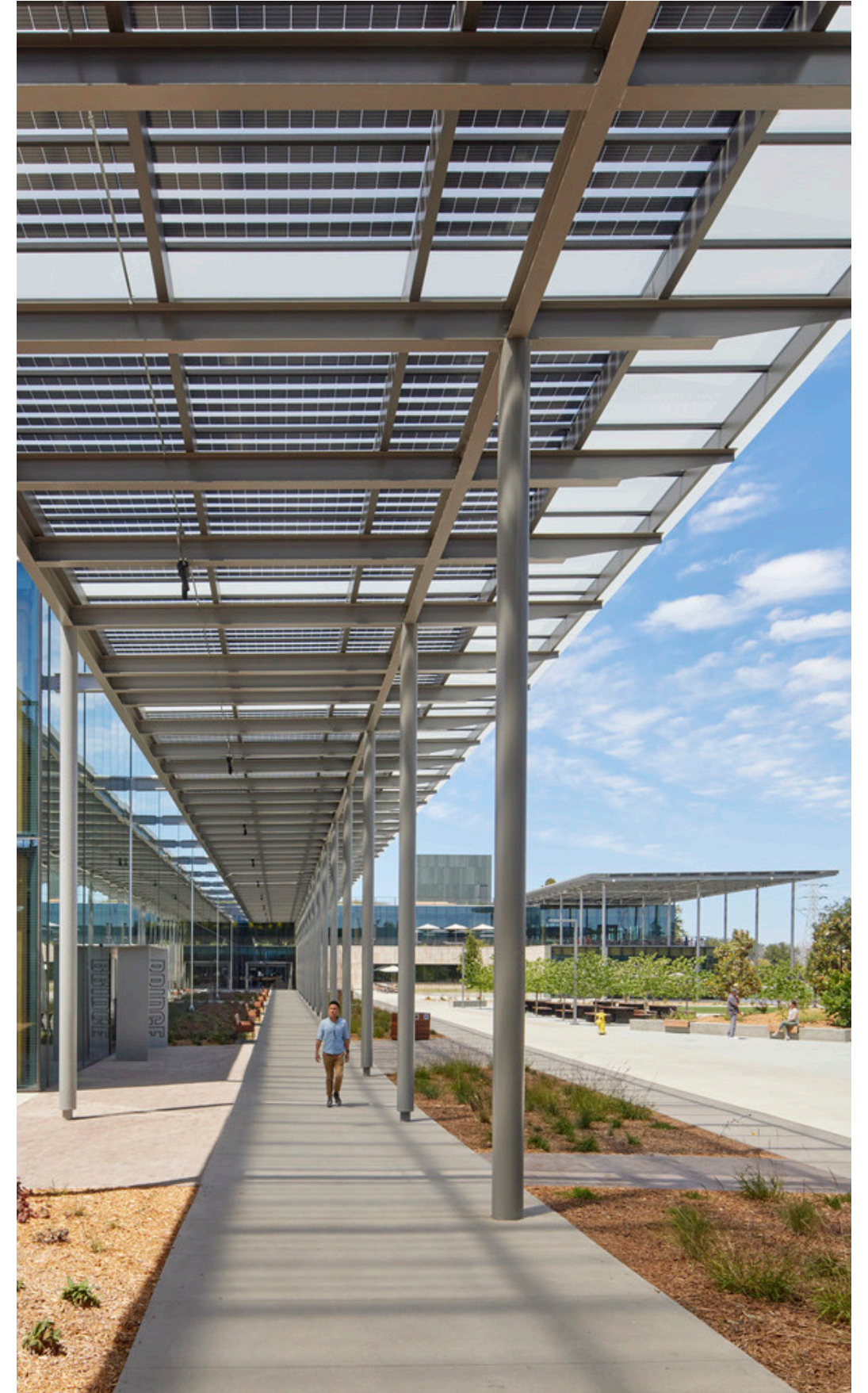
- MAINTENANCE & OPERATIONS
- PUBLIC SAFETY
- CENTRAL UTILITY PLANT
- MEPT & SERVICE

- 1 Central Utility Plant
- 2 Service Yard
- 3 M&O Building



Sustainability Strategies

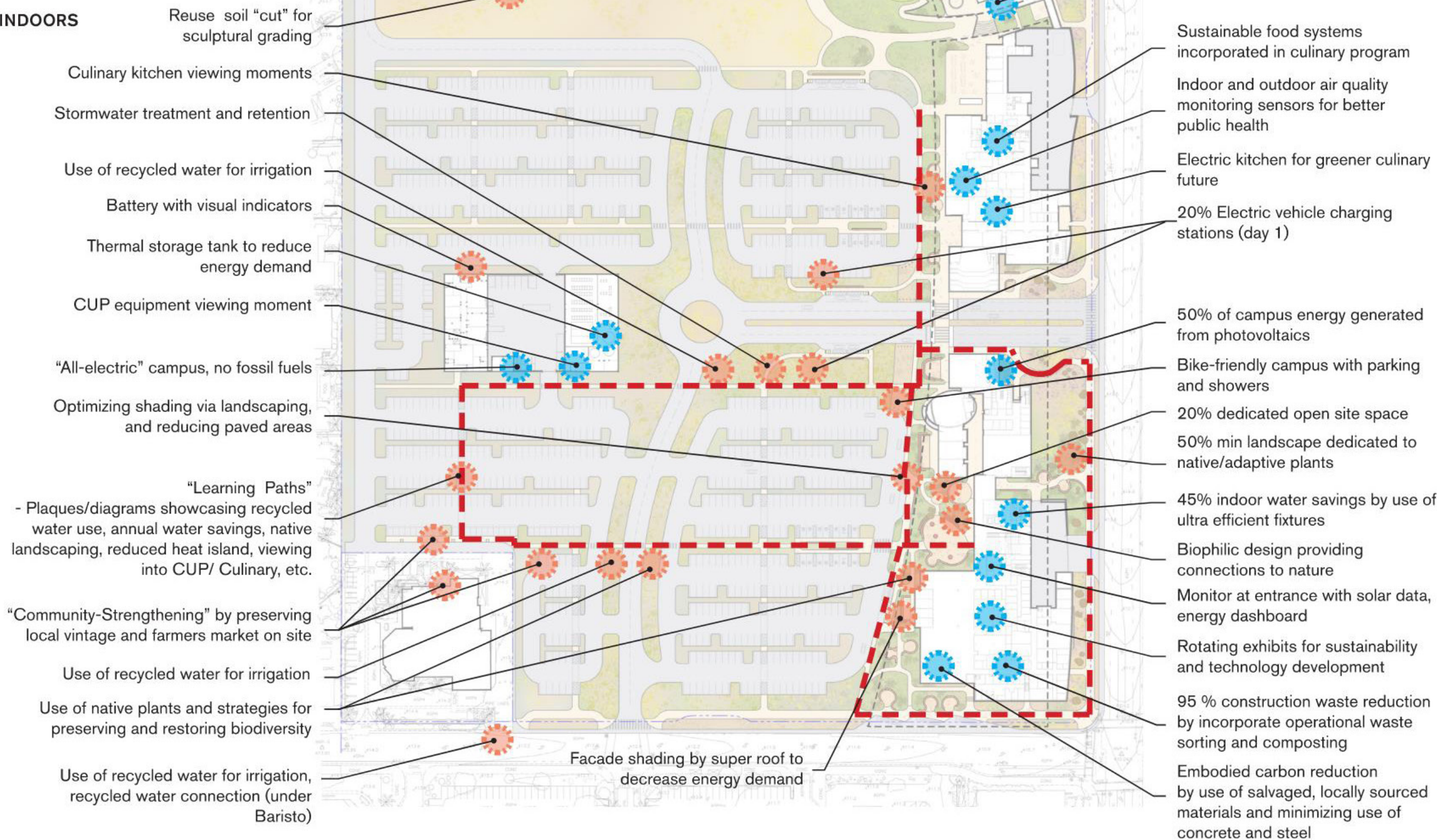
- 50% of campus energy generated onsite from photovoltaics
- “All-electric” campus (no fossil fuel except for instruction ex. kitchens and science labs)
- 20% Electric vehicle charging stations (day 1)
- 45% indoor water savings
- 50% min landscape dedicated to native/adaptive plants
- Recycled water connection (under Baristo)
- Stormwater capture/reduced heat island effect
- 95% construction waste diversion
- LEED Gold Baseline (reach for Platinum)



Learning Everywhere

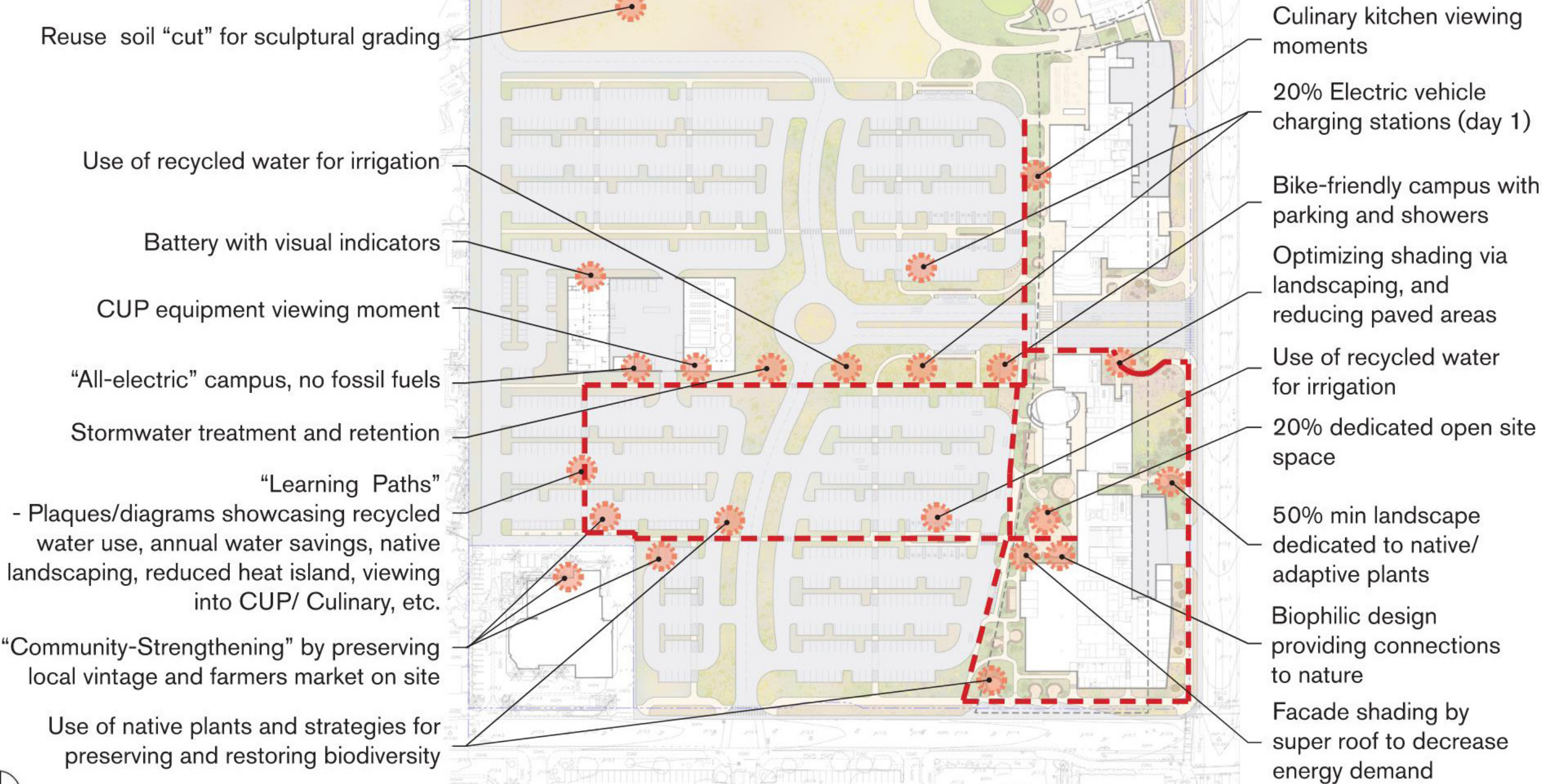
 **LEARNING OUTDOORS**

 **LEARNING INDOORS**



Learning Outdoors

LEARNING OUTDOORS



Learning Indoors

 **LEARNING INDOORS**

Thermal storage tank to reduce energy demand

CUP equipment viewing moment

"All-electric" campus, no fossil fuels

Embodied carbon reduction by use of salvaged, locally sourced materials and minimizing use of concrete and steel

45% indoor water savings by use of ultra efficient fixtures

Sustainable food systems incorporated in culinary program

Indoor and outdoor air quality monitoring sensors for better public health

Electric kitchen for greener culinary future

50% of campus energy generated from photovoltaics

High recycled content for material and finishes

45% indoor water savings by use of ultra efficient fixtures

Monitor at entrance with solar data, energy dashboard

Rotating exhibits for sustainability and technology development

95 % construction waste reduction by incorporate operational waste sorting and composting



Farrell: Main Campus Entry

